

RED MALE CARDINAL CARVING AND PAINTING

A coronavirus confinement odyssey

by

FLOYD SCHOLZ



April 2020

Floyd' Cardinal Carving Videos

<https://www.facebook.com/100007095308701/posts/2624522244460927/?d=n>

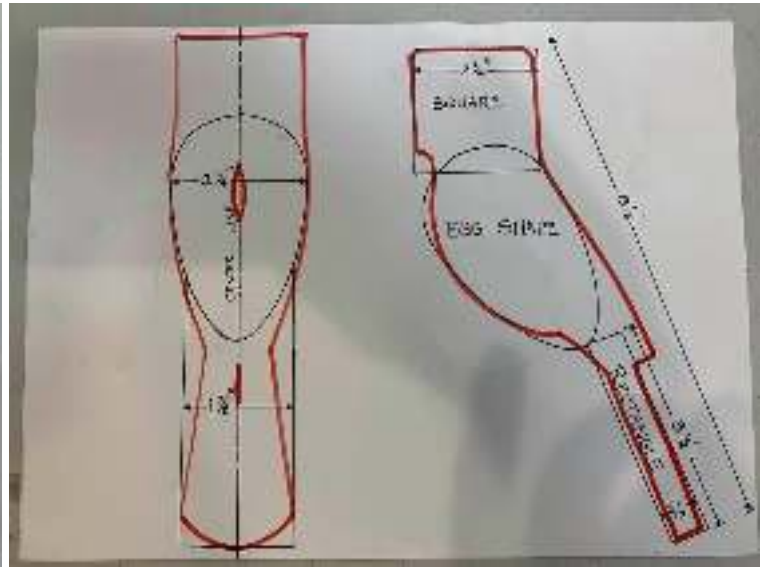
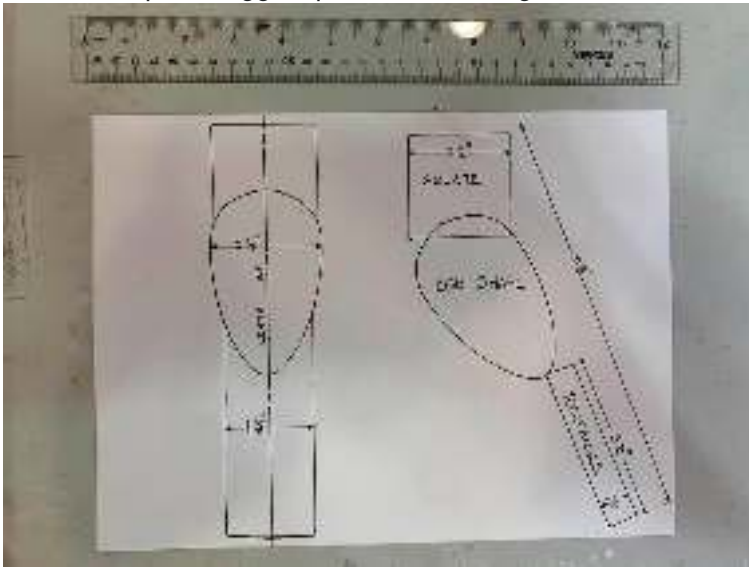
<https://www.facebook.com/100007095308701/posts/2624551634457988/?d=n>

DAY 1

Gather up all the important reference materials!
Red wine you ask? Well Cardinals are red... makes sense to me!



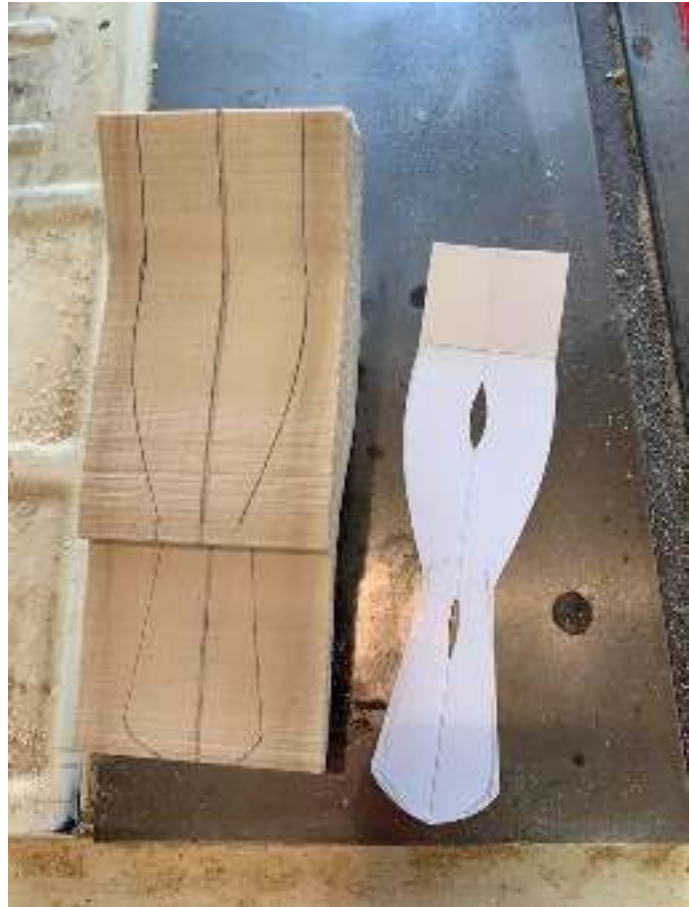
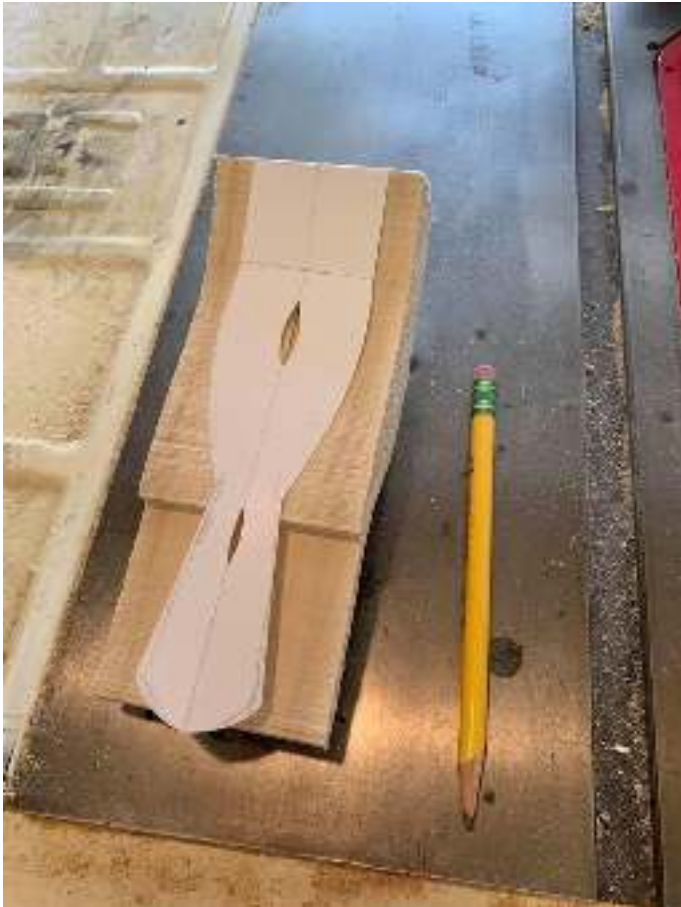
3 basic shapes... Egg, Square and rectangle.



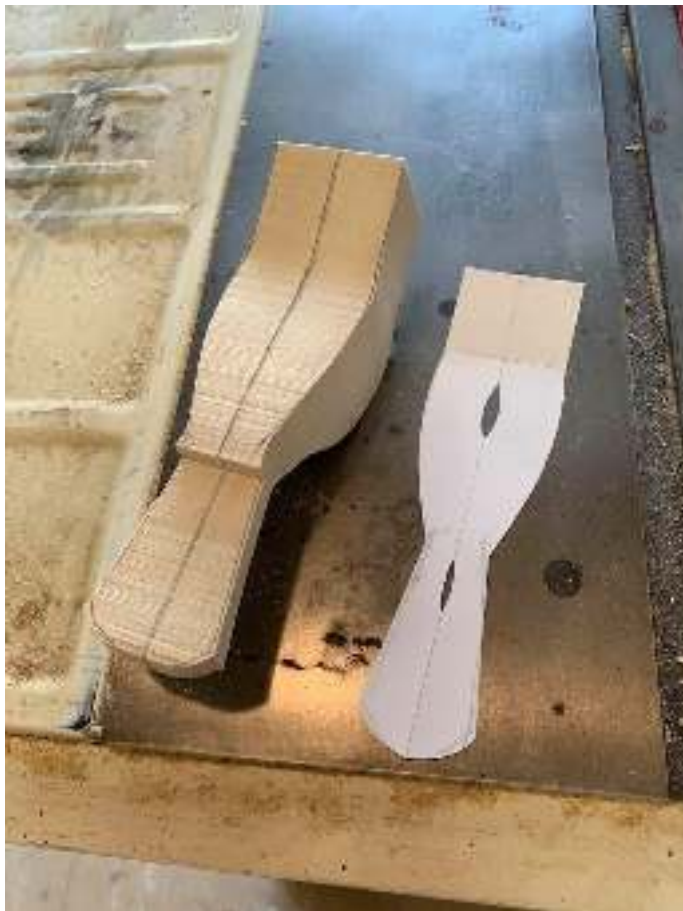
Trace the profile onto the block first... then draw in the centerline! Very important!



Trace the back pattern (the "windows" aid in alignment)



Back is cut out...



My Bandsaw is set up with a 1/4" scroll blade (7 teeth per inch)



The business end!



“Game on!” Gesswein power carving system with slender head attachment and a “Scholz Stump cutter”
(call Jim Hahn at 1-410-638-5850)



Lay out reference lines



Establish the basic body shape first... redraw the guide lines if you carve them off and once shaped, I like to lightly sand the surface to “clean it up” Even at this early stage, I will attach a holding device to position the bird in the desired pose... A Panavise is an essential tool!



Layout the major back feather group (scapulars) and cut below the line where the "X's" are... make cut 1/8"

Wing feather groups drawn in...



Major feather groups all "blocked in" (elapsed time from bandsaw: 90 minutes..). Time to focus on the head... I think I'll have him singing his little heart out!



Often, the most difficult birds to do are the one's we're most familiar with... For years, I've struggled with Chickadees, Robins, and of course... Cardinals! Avoid the temptation to make them too plump or "cute". Unless it's really, really cold, they don't "Fluff up" as much as you might think... The late great Bob Guge was one of the few artists who could convincingly pull off that fluffed up look! But cheer up! There is hope... He and Jody gave us Josh Guge!



Trim down to, but leave the lines!



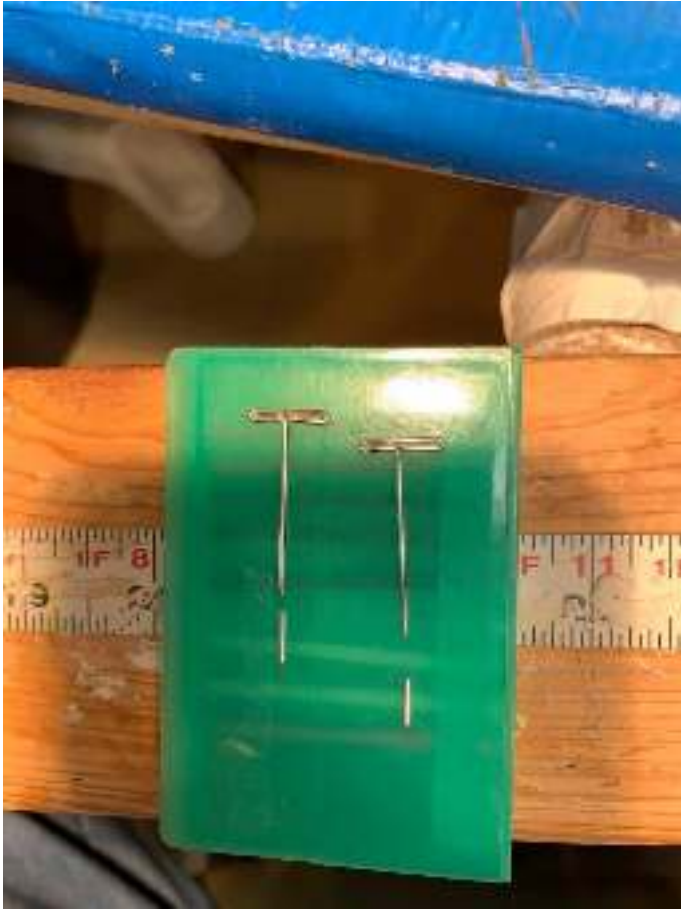
Head refinement...



Ready to open the mouth!



Due to the extreme fragility of the tips of an open beak I insert pieces of straight pins into the tips. Now I will dip each tip into super glue and then baking soda to create a hard "Crystal" tip... It's a handy repair technique for broken wing tips, talons, beaks ect... a diamond stone works well to shape it once it hardens..👍



Crystal "boogers" ! 😊



Beak shaped and sanded with a thick coat of Polyurethane. Ready for the eyes... 7mm medium brown



A decent day's work! It all started this morning with a cup of coffee and a song ♡



Floyd' Cardinal Carving Videos

Hi friends!

I'm back in the Studio after a busy and stormy morning here in central Florida!

Let's do some more carving!

Settle in, buckle up and let's get ready for one heck of a ride!

<https://www.facebook.com/100007095308701/posts/2625656304347521/?d=n>

Contour layout lines It's all about da FLOW!

(right Claudia)?

<https://www.facebook.com/100007095308701/posts/2625671094346042/?d=n>

DAY 2

In the history and development of decorative Birdcarving, up until the mid to late 1960's, most carvers might be content to just create the accurate shape of the bird and apply paint. As new high-speed rotary tools became more commonplace, they gave the carver/ artist the ability to be more sculptural in interpreting feather groupings and underlying musculature ... this was a giant step forward! Here, I've completed the first step in creating a pleasing and anatomically accurate landscaped surface.



Time to create some surface “frumpiness” these “contour “U”s” are first drawn in with a pencil and then using an 1/8” round ruby ball run at 55,000 to outline each “U” creating sort of a scaled look throughout the body except for the tail and lower wings.



The effect before final sanding....



The crest! Best to use a slightly worn diamond point run at high speed! A steady hand wins the day...



That's a wrap for today! Tomorrow we'll tackle the major flight feathers... Stay safe, stay healthy!



Floyd' Cardinal Carving Videos

April 19

Happy Sunday! Let's do this!

<https://www.facebook.com/100007095308701/posts/2626526847593800/?d=n>

Flight feathering step 1

<https://www.facebook.com/100007095308701/posts/2626546530925165/?d=n>

Fine tooth cylinder run at 35,000. (A medium grit diamond cylinder works great too!

<https://www.facebook.com/100007095308701/posts/2626550600924758/?d=n>

My home built dust collection system...

<https://www.facebook.com/100007095308701/posts/2626602354252916/?d=n>

DAY 3



Flight feathers





Under tail feathers...

The shape of the "flame cutter" perfectly replicates the concave curvature of this grouping of long straight feathers.



A view from down under!



Tomorrow (Monday) we'll sand and smooth down the bumps on the Cardinal and prepare the surface for texturing ... For comparison, here's a Bluebird project that I've already sanded... note the softness and subtlety of the "U's" that's our objective.



Floyd' Cardinal Carving Videos

April 20

Our Cardinal journey continues!

<https://www.facebook.com/100007095308701/posts/2627210940858724/?d=n>

Additional hand sanding using 400 grit paper and a 1/4" diameter rubber cylinder...

<https://www.facebook.com/100007095308701/posts/2627416214171530/?d=n>

After all the sanding is complete, the use of burnishing balls provides additional "volume" to the surface prior to texturing...

<https://www.facebook.com/100007095308701/posts/2627418664171285/?d=n>

Day's end... " Filling in the blanks..."

<https://www.facebook.com/100007095308701/posts/2627484967497988/?d=n>

DAY 4

Wrap the sticky back sandpaper clockwise around the slotted mandrel and slow your hand piece down to about 14,000 rpm



Ahhh... smooth as a newborn baby's butt!

And! An astonishingly beautiful Rosewood base to mount him upon! It's beginning to all come together!



Completely sanded and burnished... ready for texturing!
I can't wait till tomorrow! 👍👍👍👍



Floyd' Cardinal Carving Videos

Contour sanding Earl Scruggs and feather ripples!

<https://www.facebook.com/100007095308701/posts/2627488660830952/?d=n>

Contour sanding before and after on a Merlin!



DAY 5

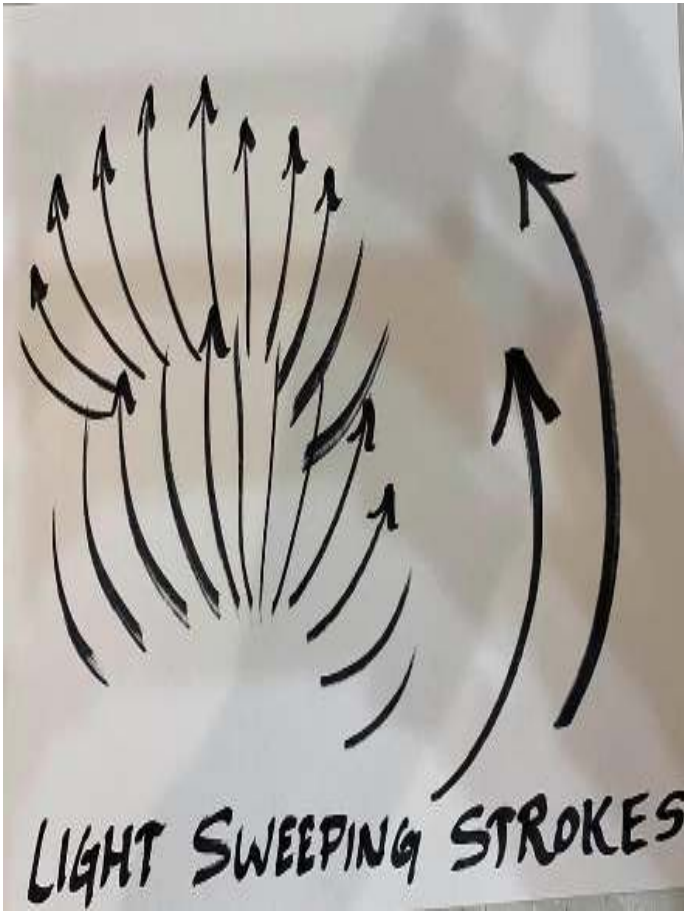
Tackling the stoning texture first... a small white cylinder run at high speed... and angle your work lamp low so as to cast shadows as you proceed... It makes it much easier to see...



This wonderful photo really shows the amazing textural variety of the Cardinal's feathering. Each grouping must be approached differently to achieve the desired effect.... A never ending challenge for the carver/artist!



I call these... "eye lash" strokes...



Under tail coverts... After and before stoning



Floyd' Cardinal Carving Videos

April 21

Tuesday ! Cardinal journey day #5. Texturing

<https://www.facebook.com/100007095308701/posts/2627966220783196/?d=n>

The art of stoning in softer feathers...
try not to press down., just let the weight of the handpiece dictate the depth of the line.

<https://www.facebook.com/100007095308701/posts/2628105270769291/?d=n>

No words necessary... see the evolution.



All the stoned areas have been completed.



Floyd' Cardinal Carving Videos

Public service announcement

<https://www.facebook.com/100007095308701/posts/2628803194032832/?d=n>

Floyd' Cardinal Carving Videos

April 23

Good morning!!

The importance of proper Wood burning and focus cannot be overstated!

<https://www.facebook.com/100007095308701/posts/2629755240604294/?d=n>

DAY 6

Wood burning equipment used for texturing the Cardinal

There are many really good wood burners available from a variety of great companies. It's just a matter of personal preference. For the past 40 years, I've been using Colewood brand.

www.woodburning.com



Before committing tool to wood, it's helpful to draw in several directional lines to ensure consistency throughout the groupings.



Clean and tight burning to wrap up all the major flight feathers... on to the contours tomorrow.



DAY 7

As seen in the photo of the actual Cardinal, notice the dramatic variation in feather structure on the upper back as opposed to the front... To begin the process, draw these in with a soft pencil and draw them small closer to the head and gradually increase the size of each feather. These will be burned from the outer edge of the "U" inward.



Emphasis flow patterns!



All burning completed... Phew!



Research is SO important when it comes to knowing the colors you'll need to paint a red bird!



Floyd' Cardinal Carving Videos

April 24

Good Morning neighbor! Let's paint a Cardinal!

<https://www.facebook.com/100007095308701/posts/2630617410518077/?d=n>

It's "Showtime" !

<https://www.facebook.com/100007095308701/posts/2630942587152226/?d=n>

To begin, a clean and well lit area is essential!

I use 2 water jars and a #1 and #6 pointed sable and a 1/2" oval wash brush . I will also use an air brush.

My personal favorite is a plastic cheapie called an Aztec.

There are lots of great airbrushes out there and it's just a matter of personal choice.



I like Liquitex acrylics and am now experimenting with the new Liquitex acrylic gouache.

My color usage is simple... Cadmium Red medium, Ultramarine Blue, Burnt Umber and Hooker's Green.



Your objective is to achieve consistent, balanced coverage. This is after 2 coats. I use a 1/2" overall was brush to work the gesso into all the "nooks and crannies". 3 coats should do it.



For the 4th and final base coat of White Gesso, I will add a drop or two of either Iridescent white or because it is a red bird, this paint called interference red... This "juices up" the base yielding brighter consecutive colors... I do a lot of "foundation" painting before the actual color of the bird is applied.

At this point I clean the eyes to "wake him up". And add some bright yellow to the upper breast area to brighten these high spots up.



I'm using an airbrush to softly put in the underlying shade and shadow throughout the front of the Cardinal. A dry 1/2 wash brush makes a perfect mask as I work my way up toward the head area. Why green you ask? It's the "complimentary color" of red.. (opposite on a color wheel). perfect for rich shadows....



Equal amounts mixed yields a perfect, rich black



All the foundation painting is complete! Now comes the easy part... multiple wash coats of... you guessed it, RED!



It's "Showtime" !



Wash coat #1



It's going to look Horrible at first... It is supposed to!



Male Cardinals are not uniformly red all over... hence the darker back on my carving...



Wash coat # 3 See how it works👍. All the subtlety comes through!



To wrap it up for today, I mixed about 20% yellow oxide to the body color (Cadmium Red medium) and painted the outside of the beak... I'm tired and need a Beer! See you tomorrow 👍



Floyd' Cardinal Carving Videos

April 25

During this difficult time stay in touch with those you love!

<https://www.facebook.com/100007095308701/posts/2631453397101145/?d=n>

Punch list!

<https://www.facebook.com/100007095308701/posts/2631491453764006/?d=n>

DAY 7

With a 1" oval sable brush, pick up a small amount of a lighter value paint of the body color (add 10% white and a touch of yellow to Cadmium Red). With almost all of the paint removed off the DRY brush, brush it rapidly across the texturing in the feathered areas you want to highlight. Here's a sequence of before and after.



The "dry brush color"



These are the overlap areas where you can really have some fun! I used a fine #1 sable and lightly swept in some lighter colored brushstrokes.



Feather shaft highlight trick! 😊
Use a sharp soft lead #2 pencil and simply draw on the top of each feather shaft...

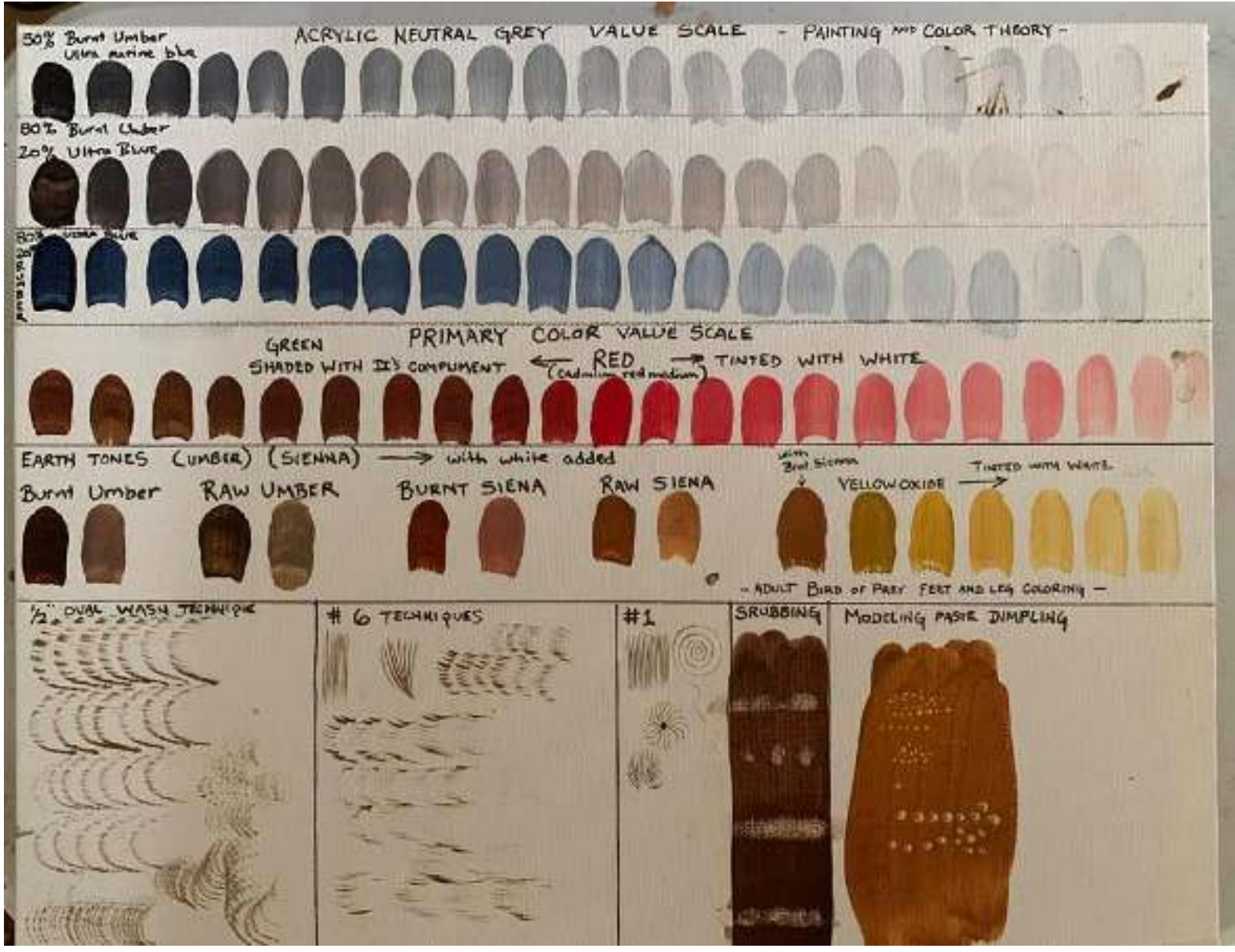


Here's a before and after... 👍



DAY 8

As a follow up to the past couple of days of painting, this simplistic color chart that I came up with illustrates my theory of color.



Floyd' Cardinal Carving Videos

April 27
Monday!

<https://www.facebook.com/100007095308701/posts/2633034393609712/?d=n>

Shaping the toes out of 1/8" copper Wire

<https://www.facebook.com/100007095308701/posts/2633280176918467/?d=n>

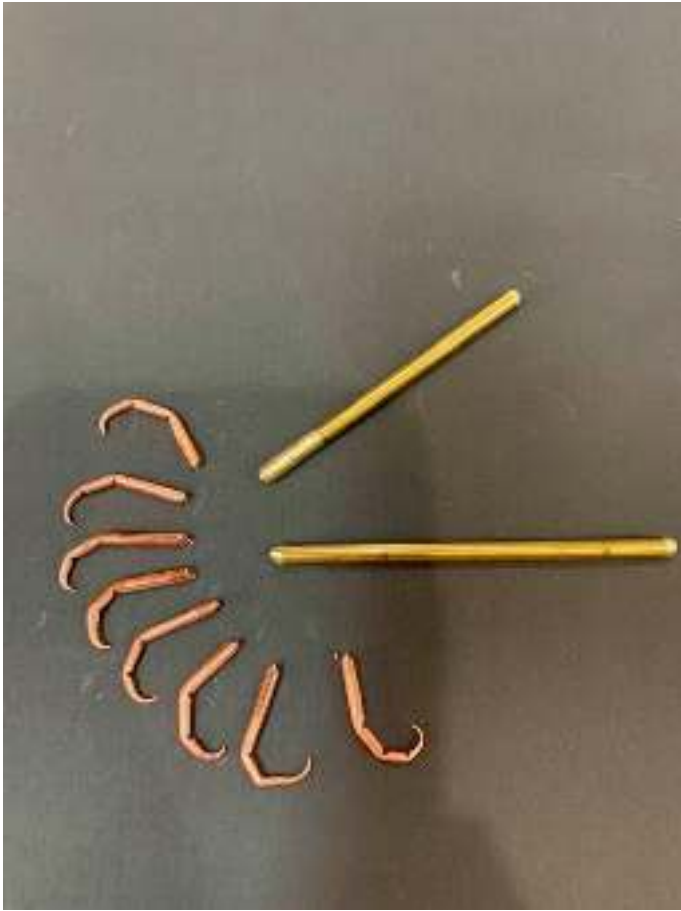
Our happy little Cardinal is up on his perch! I'm using soft 1/8th" diameter copper wire to establish the correct angle of the legs. The actual legs will be brass and the toes copper. I'll cover that tomorrow... Today has been a lazy Sunday 🤷



Shaping the toes out of 1/8" copper Wire



8 toes fully shaped and leg Shafts ready for shaping and bending



The Brass legs are ready for carving..
Pictured is the cutter bit which will be used...
Yes... Jaymes Company (410) 638-5850



Floyd' Cardinal Carving Videos

April 28

Starting a new day thinking about working on the feet but this whole
“Stay at Home” Quarantine thing has me SO STRESSED OUT !!!!

<https://www.facebook.com/100007095308701/posts/2633750266871458/?d=n>

I won't be “de-feeted”.

<https://www.facebook.com/100007095308701/posts/2633943270185491/?d=n>

And so it goes...

<https://www.facebook.com/100007095308701/posts/2635472290032589/?d=n>

Preparation for soldering on the toes...

Making larger Raptor toes using A+B Epoxy Putty !
(a bonus technique at no extra charge!)

<https://www.facebook.com/100007095308701/posts/2635732166673268/?d=n>

<https://www.facebook.com/100007095308701/posts/2635796743333477/?d=n>

Ask any artist about time management

<https://www.facebook.com/100007095308701/posts/2635843233328828/?d=n>

Brass legs fit perfectly... they are slightly thicker than the actual leg as they will be reduced and shaped. Then, one by one the toes are bent to fit.



Preparation for soldering on the toes...



Carefully and tightly fused to the leg shaft...



Floyd' Cardinal Carving Videos

May 1st

Getting it done...

<https://www.facebook.com/100007095308701/posts/2635950826651402/?d=n>

I hate that song!

<https://www.facebook.com/100007095308701/posts/2636063903306761/?d=n>

Ahhh... my favorite part! Finishing it AND GETTING PAID!

<https://www.facebook.com/100007095308701/posts/2636474856598999/?d=n>

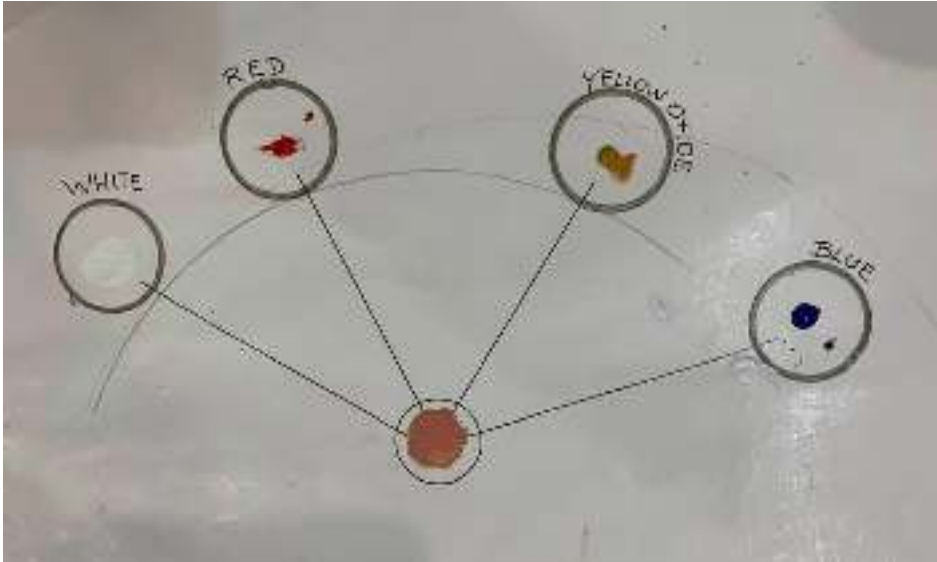
A bird has gotta have a tongue!



Interior open mouth details....

Paint the entire interior of the open mouth and tongue with a flesh color (achieved by mixing the colors shown)

Once dry, coat with acrylic gloss medium.. dry it and then a thin wash of burnt sienna...allow the burnt sienna pigment to settle into all the carved detailing... The little tongue is made from A+B epoxy..





Floyd' Cardinal Carving Videos

May 3

<https://www.facebook.com/100007095308701/posts/2637938786452606/?d=n>